

Estimação de taxas de migração por grupos etários com dados de última etapa e data fixa
 (POP/866 – Tópicos Avançados de Pesquisa em Migração)
 Ernesto Friedrich de Lima Amaral
 24 de junho de 2008

Fórmula original de Machado (1993) das Taxas Específicas de Emigração ($TEE_{x,ij}$):

$$TEE_{x,ij} = \frac{\sum_{t=0}^4 K_{t,ij}}{K_{1,i} + 2K_{2,i} + 3K_{3,i} + 4K_{4,i} + 5K_{nm,i}}$$

Reformulação matemática das $TEE_{x,ij}$ (Amaral, Rodrigues e Fígoli 2004):

$$TEE_{x,ij} = \frac{\sum_{t=0}^4 K_{t,ij}}{0,5K_{0,i} + 1,5K_{1,i} + 2,5K_{2,i} + 3,5K_{3,i} + 4,5K_{4,i} + 4,5K_{0,i} + 3,5K_{1,i} + 2,5K_{2,i} + 1,5K_{3,i} + 0,5K_{4,i} + 5K_{nm,i}}$$

onde:

$TEE_{x,ij}$ = Taxa Específica de Emigração da região i para a região j , na faixa etária x ;

$K_{t,ij}$ = população que migrou de i para j , com tempo de residência atual igual a t . Sendo $t = 0$ para aqueles que migraram há menos de 1 ano; $t = 1$ para aqueles que migraram há um ano, e assim por diante;

$K_{t,i}$ = somatório dos migrantes de todas as k regiões ($k \neq i$) para a região i que moram na residência atual há t anos (número de pessoas-ano dos imigrantes que passam a ter o risco de migrar dessa nova região de destino);

$K_{t,i}$ = somatório dos migrantes da região i para todas as k regiões ($k \neq i$), com tempo de residência igual a t (número de pessoas-ano que esse migrante esteve exposto ao risco de emigrar de sua região de origem);

$K_{nm,i}$ = todos os residentes em i no fim do período que já moravam em i no início do período de análise (nm = não-migrantes).

Em seguida, é estimada a Taxa de Não-Emigração Total (TNT):

$$TNT_{ij} = \exp\left[-\int_0^x TEE(u)du\right] = \exp\left(-\sum TEE_{x,ij}\right)$$

Por fim, é calculada a Taxa de Emigração Total (TET):

$$TET_{ij} = 1 - TNT_{ij}$$

A fórmula para a estimação das taxas de migração com dados de data fixa (Amaral, Rodrigues e Fígoli 2004) é a seguinte:

$$TEE_{x,ij} = \frac{\sum K_{ij}}{t * \sum \left[\frac{(K_{i.} + K_{.i}) + (K_i)}{2} \right]}$$

onde:

$TEE_{x,ij}$ = Taxa Específica de Emigração da região i para a região j , na faixa etária x ;

K_{ij} = população que estava na localidade i em 1º de setembro de 1986 e que residia na localidade j na data de referência do censo;

$K_{i.}$ = população que estava na localidade i em 1º de setembro de 1986 e que residia em uma outra localidade na data de referência do censo;

$K_{.i}$ = população que estava na localidade i em 1º de setembro de 1986 e que continuava residindo em i na data de referência do censo;

K_i = toda população que reside em i na data de referência do censo; e

t = anos entre a data de referência do censo e a data de referência da pergunta de migração de data fixa.

**Improvements of Techniques to Estimate Migration Rates:
an Application with Brazilian Censuses Data**

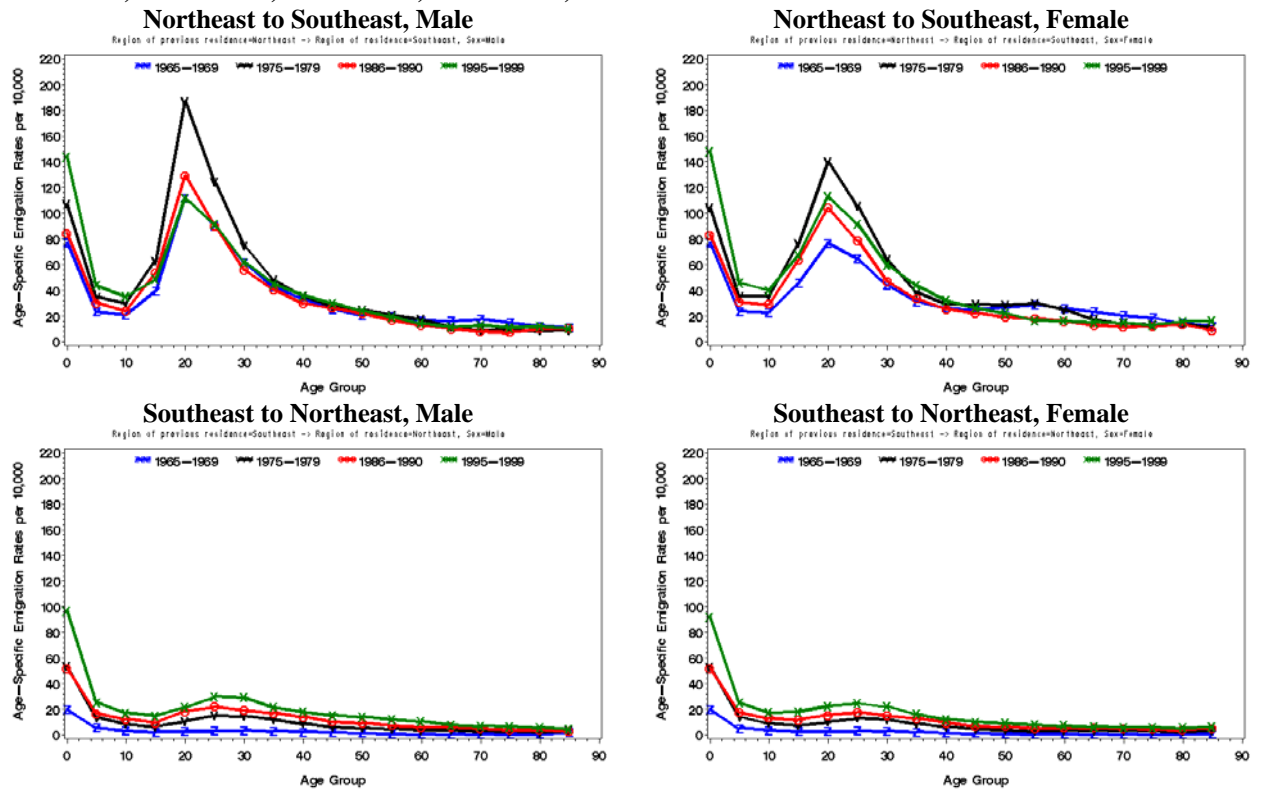
Ernesto Friedrich de Lima Amaral

Table 1: Emigration Descriptive Statistics by Sex for the Northeast and Southeast, 1965–1969, 1975–1979, 1986–1990, 1995–1999

Region	1965–1969		1975–1979		1986–1990		1995–1999	
	Male	Female	Male	Female	Male	Female	Male	Female
Total Number of Emigrants								
Northeast to Southeast	275,271	257,916	479,296	475,917	466,599	462,223	584,140	632,166
Southeast to Northeast	33,413	31,537	131,967	122,312	220,213	199,642	354,671	319,506
Population at the Beginning of the Period								
Northeast to Southeast	15,231,876	15,647,004	17,922,897	18,661,136	21,386,107	22,347,267	24,125,153	25,153,124
Southeast to Northeast	19,356,335	19,433,996	24,854,997	25,082,990	30,494,899	31,387,211	34,533,615	35,955,314
Proportion of Emigrants on the Population of Origin								
Northeast to Southeast	0.0181	0.0165	0.0267	0.0255	0.0218	0.0207	0.0242	0.0251
Southeast to Northeast	0.0017	0.0016	0.0053	0.0049	0.0072	0.0064	0.0103	0.0089
Total Emigration Rate (TER_{ij})								
Northeast to Southeast	0.0635	0.0591	0.0808	0.0780	0.0642	0.0611	0.0737	0.0768
Southeast to Northeast	0.0057	0.0051	0.0179	0.0165	0.0235	0.0212	0.0353	0.0310

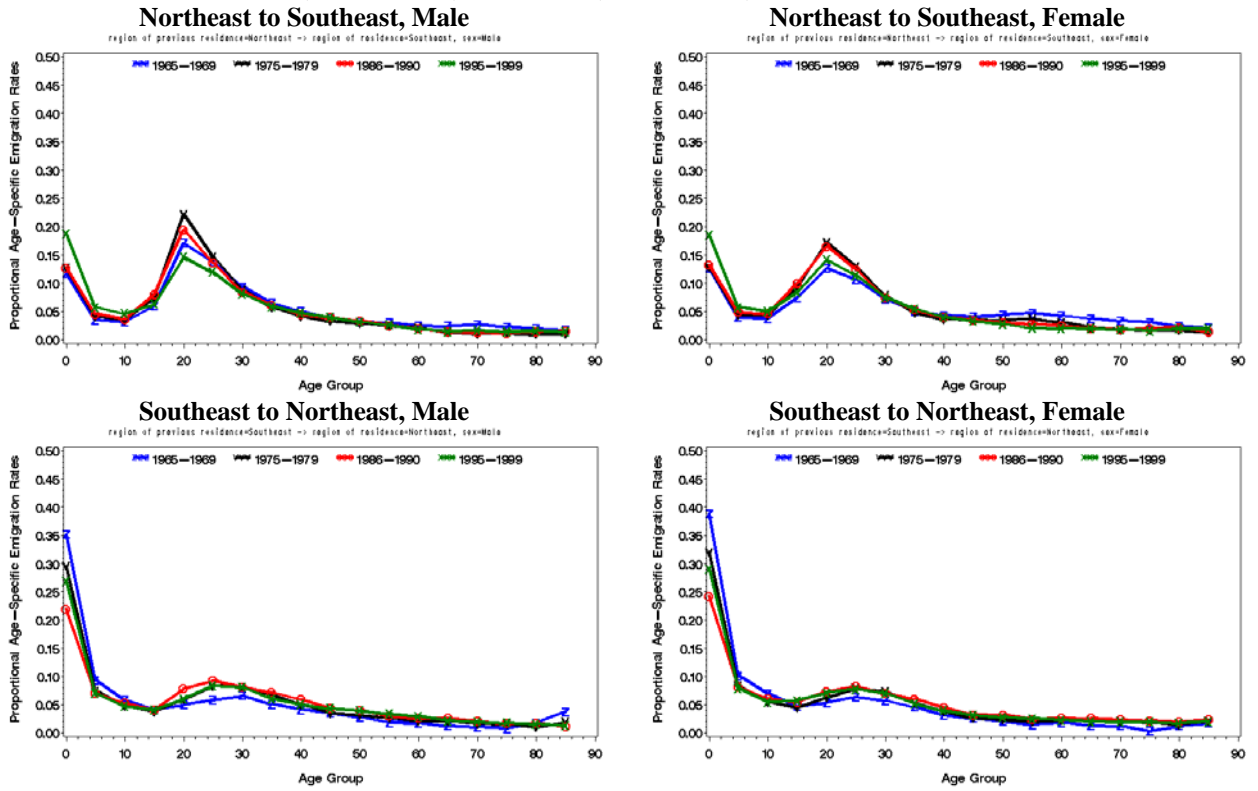
Source: IBGE 1970, 1980, 1991, 2000.

Figure 1: Age-specific Emigration Rates ($ASER_{x,ij}$) by Age Group and Sex for the Northeast and Southeast, 1965–1969, 1975–1979, 1986–1990, 1995–1999



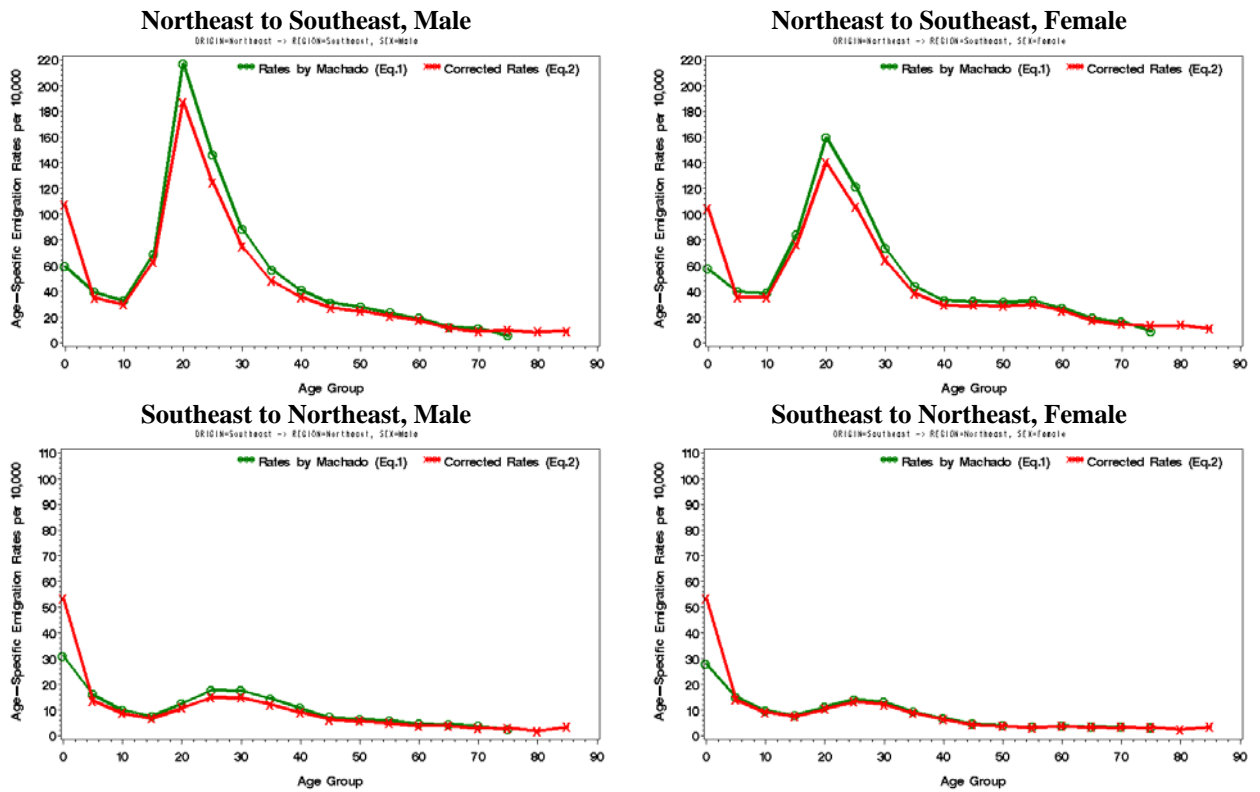
Source: IBGE 1970, 1980, 1991, 2000.

Figure 2: Proportional Age-specific Emigration Rates ($ASER_{x,ij}$) by Age Group and Sex for the Northeast and Southeast, 1965–1969, 1975–1979, 1986–1990, 1995–1999



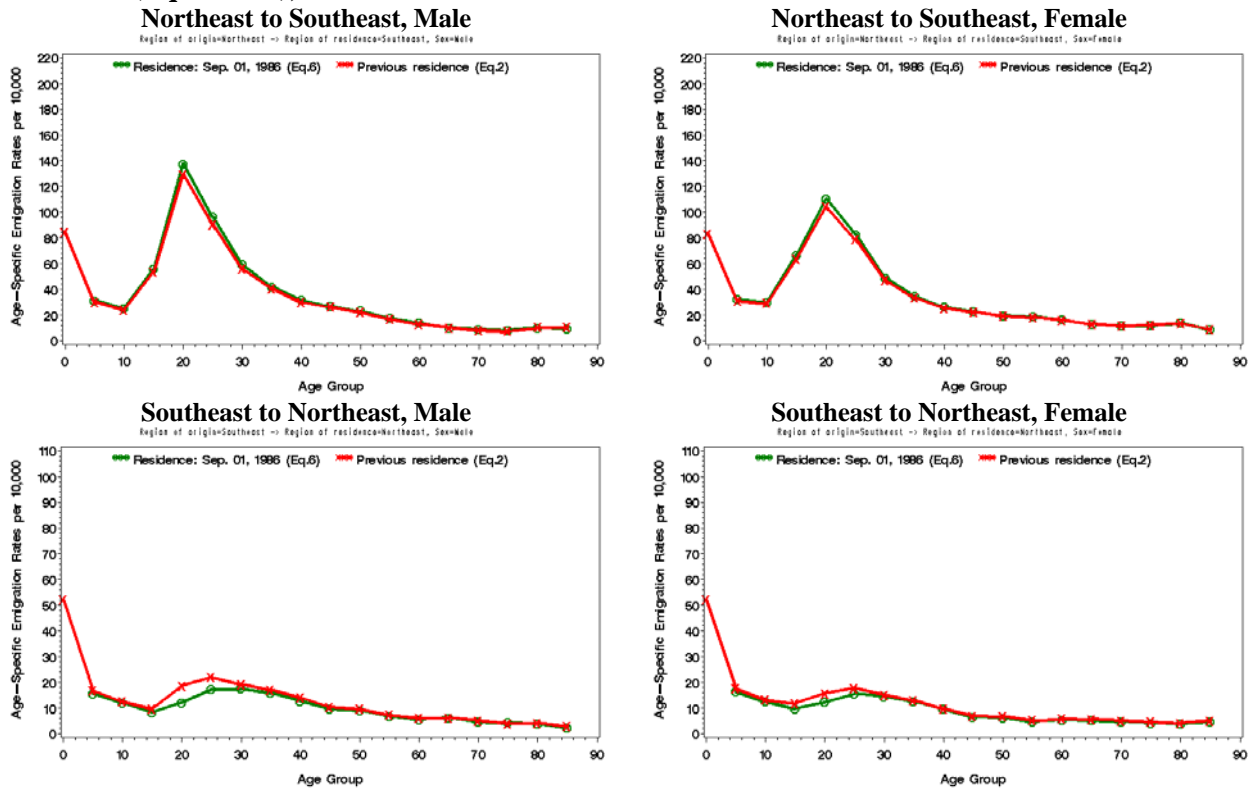
Source: IBGE 1970, 1980, 1991, 2000.

Figure 3: Age-specific Emigration Rates ($ASER_{x,ij}$) by Age Group and Sex for the Northeast and Southeast, Using Rates Estimated by Machado (Equation 1) and Corrected Rates (Equation 2), 1975–1979



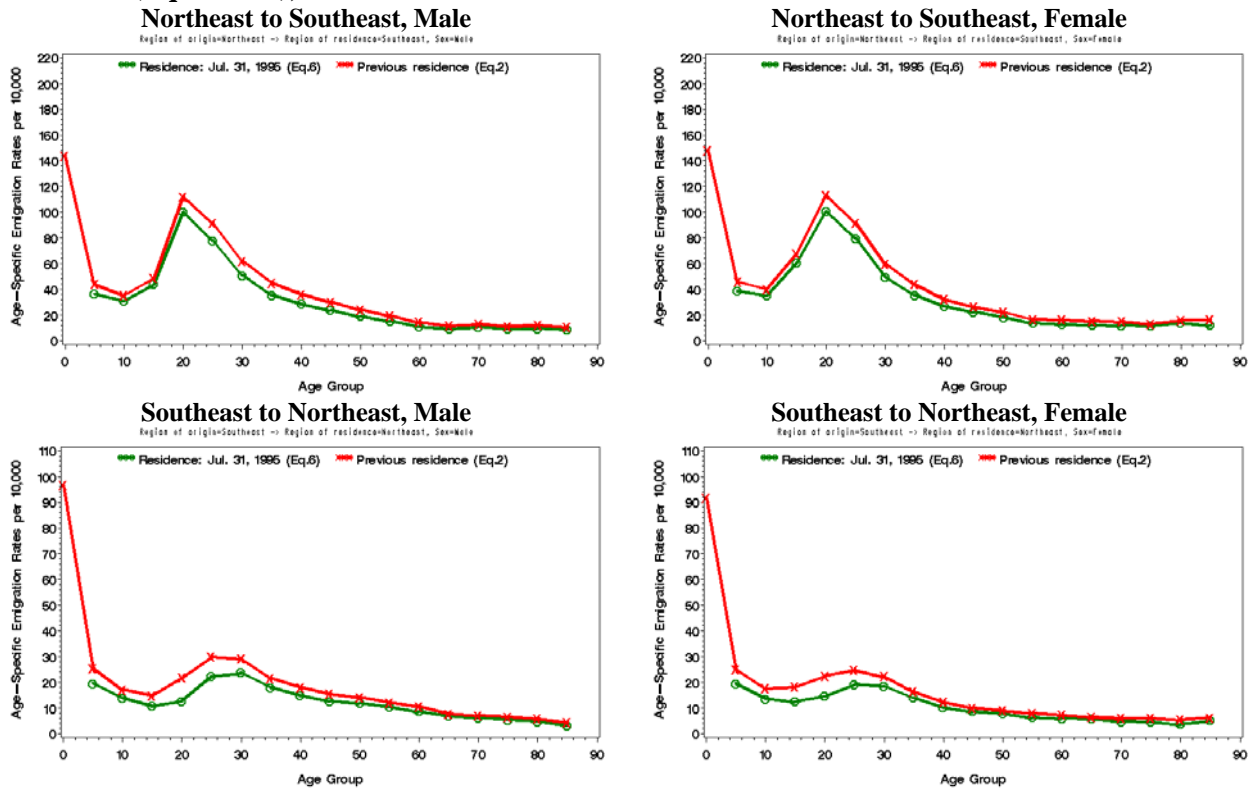
Source: Machado 1993; and IBGE 1980.

Figure 4: Age-specific Emigration Rates ($ASER_{x,ij}$) by Age Group and Sex for the Northeast and Southeast, Using Data on Residence Five Years Before the Census (Equation 6) and Previous Residence (Equation 2), 1986–1990



Source: IBGE 1991.

Figure 5: Age-specific Emigration Rates ($ASER_{x,ij}$) by Age Group and Sex for the Northeast and Southeast, Using Data on Residence Five Years Before the Census (Equation 6) and Previous Residence (Equation 2), 1995–1999



Source: IBGE 2000.

Appendix 1

Table 1: Age-specific Emigration Rates ($ASER_{x,ij}$) by Age Group and Sex from Northeast to Southeast, Estimated with Information on Place of Previous Residence (Last-Move Data) and Duration of Residence (Equation 2), 1965–1969, 1975–1979, 1986–1990, 1995–1999

Age group	Male				Female			
	1965–1969	1975–1979	1986–1990	1995–1999	1965–1969	1975–1979	1986–1990	1995–1999
0–4	0.007713	0.010679	0.008452	0.014370	0.007701	0.010449	0.008343	0.014788
5–9	0.002309	0.003478	0.003019	0.004388	0.002375	0.003533	0.003096	0.004587
10–14	0.002106	0.002991	0.002417	0.003534	0.002301	0.003543	0.002905	0.004033
15–19	0.003950	0.006305	0.005330	0.004851	0.004573	0.007662	0.006361	0.006740
20–24	0.011213	0.018697	0.012913	0.011203	0.007690	0.014007	0.010422	0.011309
25–29	0.009033	0.012445	0.009046	0.009142	0.006487	0.010558	0.007876	0.009130
30–34	0.006189	0.007497	0.005602	0.006213	0.004397	0.006416	0.004715	0.005989
35–39	0.004299	0.004824	0.004070	0.004509	0.003126	0.003848	0.003346	0.004372
40–44	0.003306	0.003557	0.002994	0.003629	0.002626	0.002935	0.002542	0.003205
45–49	0.002547	0.002741	0.002606	0.003032	0.002493	0.002908	0.002232	0.002631
50–54	0.002067	0.002468	0.002214	0.002441	0.002699	0.002868	0.001912	0.002228
55–59	0.001998	0.002069	0.001694	0.001964	0.002878	0.002999	0.001817	0.001678
60–64	0.001651	0.001739	0.001296	0.001429	0.002595	0.002486	0.001589	0.001626
65–69	0.001633	0.001158	0.001012	0.001137	0.002314	0.001741	0.001291	0.001560
70–74	0.001769	0.000898	0.000815	0.001301	0.002028	0.001424	0.001139	0.001498
75–79	0.001501	0.000984	0.000751	0.001110	0.001875	0.001343	0.001252	0.001299
80–84	0.001257	0.000836	0.001027	0.001216	0.001454	0.001389	0.001345	0.001589
85+	0.001103	0.000902	0.001052	0.001064	0.001253	0.001110	0.000899	0.001627
TER_{ij}^*	0.063536	0.080816	0.064159	0.073679	0.059049	0.078006	0.061136	0.076781

* TER_{ij} is the Total Emigration Rate.

Source: IBGE 1970, 1980, 1991, 2000.

Table 2: Age-specific Emigration Rates ($ASER_{x,ij}$) by Age Group and Sex from Southeast to Northeast, Estimated with Information on Place of Previous Residence (Last-Move Data) and Duration of Residence (Equation 2), 1965–1969, 1975–1979, 1986–1990, 1995–1999

Age group	Male				Female			
	1965–1969	1975–1979	1986–1990	1995–1999	1965–1969	1975–1979	1986–1990	1995–1999
0–4	0.002004	0.005335	0.005208	0.009667	0.002004	0.005327	0.005193	0.009171
5–9	0.000536	0.001368	0.001677	0.002539	0.000525	0.001402	0.001749	0.002494
10–14	0.000332	0.000868	0.001254	0.001706	0.000360	0.000919	0.001314	0.001753
15–19	0.000239	0.000675	0.000973	0.001477	0.000244	0.000751	0.001181	0.001823
20–24	0.000284	0.001079	0.001862	0.002176	0.000276	0.001042	0.001566	0.002244
25–29	0.000332	0.001499	0.002202	0.003001	0.000326	0.001324	0.001773	0.002465
30–34	0.000377	0.001487	0.001923	0.002918	0.000296	0.001214	0.001512	0.002223
35–39	0.000292	0.001223	0.001710	0.002164	0.000236	0.000883	0.001297	0.001633
40–44	0.000239	0.000917	0.001407	0.001812	0.000163	0.000638	0.000972	0.001230
45–49	0.000203	0.000628	0.001027	0.001551	0.000133	0.000432	0.000689	0.000998
50–54	0.000159	0.000567	0.000950	0.001419	0.000106	0.000389	0.000687	0.000905
55–59	0.000106	0.000490	0.000723	0.001225	0.000076	0.000328	0.000519	0.000800
60–64	0.000101	0.000383	0.000608	0.001068	0.000096	0.000377	0.000564	0.000721
65–69	0.000070	0.000389	0.000616	0.000781	0.000066	0.000348	0.000556	0.000643
70–74	0.000061	0.000294	0.000499	0.000706	0.000064	0.000347	0.000500	0.000603
75–79	0.000047	0.000293	0.000389	0.000651	0.000019	0.000323	0.000458	0.000606
80–84	0.000099	0.000186	0.000415	0.000583	0.000067	0.000248	0.000410	0.000545
85+	0.000214	0.000350	0.000281	0.000451	0.000094	0.000346	0.000507	0.000636
TER_{ij}^*	0.005681	0.017871	0.023445	0.035260	0.005140	0.016501	0.021220	0.031002

* TER_{ij} is the Total Emigration Rate.

Source: IBGE 1970, 1980, 1991, 2000.

Appendix 2

Table 1: Age-specific Emigration Rates ($ASER_{x,ij}$) by Age Group and Sex between Northeast and Southeast, Estimated by Machado (Equation 1), 1975–1979

Age group	Northeast–Southeast		Southeast–Northeast	
	Male	Female	Male	Female
0–4	0.005920	0.005743	0.003097	0.002798
5–9	0.003928	0.003976	0.001604	0.001509
10–14	0.003317	0.003903	0.000997	0.000975
15–19	0.006888	0.008424	0.000767	0.000797
20–24	0.021708	0.015960	0.001266	0.001117
25–29	0.014639	0.012145	0.001777	0.001423
30–34	0.008851	0.007368	0.001764	0.001310
35–39	0.005698	0.004405	0.001447	0.000938
40–44	0.004089	0.003314	0.001080	0.000674
45–49	0.003122	0.003249	0.000723	0.000454
50–54	0.002789	0.003174	0.000651	0.000406
55–59	0.002320	0.003285	0.000587	0.000344
60–64	0.001906	0.002711	0.000457	0.000392
65–69	0.001262	0.001911	0.000441	0.000356
70–74	0.001115	0.001663	0.000360	0.000347
75+	0.000548	0.000898	0.000257	0.000336

Source: Machado 1993.

Appendix 3

Table 1: Age-specific Emigration Rates ($ASER_{x,ij}$) by Age Group and Sex between Northeast and Southeast, Estimated with Information on Place of Residence at a Fixed Prior Date (Equation 6), 1986–1990, 1995–1999

Age group	1986–1990				1995–1999			
	Northeast–Southeast Male	Southeast–Northeast Female	Southeast–Northeast Male	Southeast–Northeast Female	Northeast–Southeast Male	Southeast–Northeast Female	Southeast–Northeast Male	Southeast–Northeast Female
0–4	—	—	—	—	—	—	—	—
5–9	0.003136	0.003217	0.001570	0.001634	0.003634	0.003858	0.001962	0.001949
10–14	0.002539	0.003029	0.001206	0.001250	0.003119	0.003519	0.001388	0.001373
15–19	0.005579	0.006688	0.000828	0.000971	0.004378	0.006038	0.001082	0.001248
20–24	0.013775	0.011043	0.001215	0.001228	0.010023	0.010074	0.001277	0.001467
25–29	0.009645	0.008278	0.001725	0.001563	0.007785	0.007955	0.002235	0.001916
30–34	0.005942	0.004899	0.001745	0.001447	0.005093	0.004950	0.002375	0.001853
35–39	0.004210	0.003469	0.001588	0.001267	0.003554	0.003546	0.001795	0.001392
40–44	0.003169	0.002607	0.001271	0.000952	0.002871	0.002686	0.001491	0.001024
45–49	0.002678	0.002283	0.000961	0.000655	0.002394	0.002231	0.001281	0.000858
50–54	0.002318	0.001966	0.000913	0.000626	0.001906	0.001857	0.001190	0.000786
55–59	0.001755	0.001885	0.000691	0.000469	0.001523	0.001384	0.001053	0.000637
60–64	0.001405	0.001609	0.000562	0.000533	0.001101	0.001276	0.000861	0.000599
65–69	0.001003	0.001307	0.000634	0.000514	0.000926	0.001220	0.000692	0.000574
70–74	0.000894	0.001156	0.000465	0.000470	0.001069	0.001173	0.000619	0.000475
75–79	0.000822	0.001214	0.000418	0.000412	0.000907	0.001144	0.000532	0.000459
80–84	0.001008	0.001384	0.000394	0.000393	0.000946	0.001384	0.000485	0.000366
85+	0.000959	0.000889	0.000227	0.000462	0.000863	0.001201	0.000334	0.000513

Source: IBGE 1991, 2000.

Referências

- Amaral, Ernesto F. L. (2002). Master's thesis: *Funções de migração por idade e caracterização de migrantes das microrregiões de Goiás e Distrito Federal, 1975–1979 e 1986–1990*. Belo Horizonte, Brazil: Center of Development and Regional Planning (CEDEPLAR), Federal University of Minas Gerais (UFMG).
- Amaral, Ernesto F. L., Roberto N. Rodrigues and Moema G. B. Fígoli (2004). “Métodos e técnicas de mensuração de movimentos migratórios: Goiás e Distrito Federal, 1975–1979 e 1986–1990.” *Revista Brasileira de Estudos de População* 21 (2): 283–301.
- Bell, Martin (2005). “Towards Rigorous Cross-National Comparison of Internal Migration: Who Collects What?” Paper presented at the XXV International Population Conference of the International Union for the Scientific Study of Population (IUSSP), Tours, France, July 18 to 23, 2005.
- Beltrão, K. I. and M. H. F. T. Henriques (1987). “Modelagem da migração líquida rural-urbana no Brasil: décadas de 1960/1970 e 1970/1980.” *Previdência em Dados*, 2 (3): 23–36.
- Caetano, André J. (2003). IPUMS Technical Report – Migration Characteristics: *Variáveis de Migração, Raça/Cor, Religião e Deficiências Mental e Físicas: Censos de 1960, 1970, 1980, 1991, 2000*. Unpublished manuscript.
- Hinde, Andrew (1998). *Demographic Methods*. London: Arnold.
- Jannuzzi, Paulo M. (2000). “Tasas específicas por motivos y acompañantes de la migración: una contribución a la interpretación y al uso de modelos de patrones etarios de migración.” *Notas de Población* 28 (70): 33–85.
- Machado, Cláudio C. (1993). Ph.D. Dissertation: *Projeções Multirregionais de População: o Caso Brasileiro (1980–2020)*. Belo Horizonte, Brazil: Center of Development and Regional Planning (CEDEPLAR), Federal University of Minas Gerais (UFMG).
- Palmore, J. A. and R. W. Gardner (1996). *Measuring fertility, mortality, and natural increase*. Honolulu: East-West Center.
- Preston, Samuel H., Patrick Heuveline and Michel Guillot (2004). *Demography: Measuring and Modeling Population Processes*. Oxford: Blackwell Publishing.
- Rees, Philip, Martin Bell, Oliver Duke-Williams and Marcus Blake (2000). “Problems and Solutions in the Measurement of Migration Intensities: Australia and Britain Compared.” *Population Studies* 54: 207–222.
- Rogers, Andrei and Luis J. Castro (1981). *Model Migration Schedules*. Laxenburg, Austria: International Institute for Applied Systems Analysis.
- Schmertmann, Carl P. (1999). “Estimating Multistate Transition Hazards From Last-Move Data.” *Journal of the American Statistical Association* 94 (445): 53–63.
- Xu-Doeve, William L. J. (2005). “The Demographic Measurement of Migration and its Adjustment for Underestimation.” Paper presented at the XXV International Population Conference of the International Union for the Scientific Study of Population (IUSSP), Tours, France, July 18 to 23, 2005.
- Xu-Doeve, William L. J. (2006). “The Measurement of International and Internal Migration in the 2010 Global Round of Population Censuses: Twelve Key Recommendations on Questions, Concepts and Procedures.” Paper presented at the European Population Conference of the European Association for Population Studies (EAPS), Liverpool, United Kingdom, June 21 to 24, 2006.