

# **RACE SEGREGATION IN THREE BRAZILIAN METROPOLITAN AREAS**

**ERNESTO F. AMARAL**

**Population Research Center  
University of Texas at Austin**

# Introduction

- ✓ In Brazil, population segregation has some peculiarities (Telles 2004):
  - On the one hand, residential segregation is moderate, and has lower evidence of racial boundaries than in the US (intermarriage, poor neighborhoods).
  - On the other hand, race segregation still exists, because the disadvantage of nonwhites seems to be explained partly by their spatial isolation from middle class.
- ✓ This study intends to analyze the extent to which Brazilian population is segregated by race and socioeconomic status.

# Selected Metropolitan Areas



# Data and Methods

- ✓ **2000 Brazilian Census microdata.**
- ✓ **Georeferenced data for the Brazilian territory by groups of census tracts.**
- ✓ **Data is analyzed using descriptive statistics and Geographic Information Systems (GIS) techniques.**
- ✓ **Education is used as an indicator of socioeconomic status (Telles 2004).**

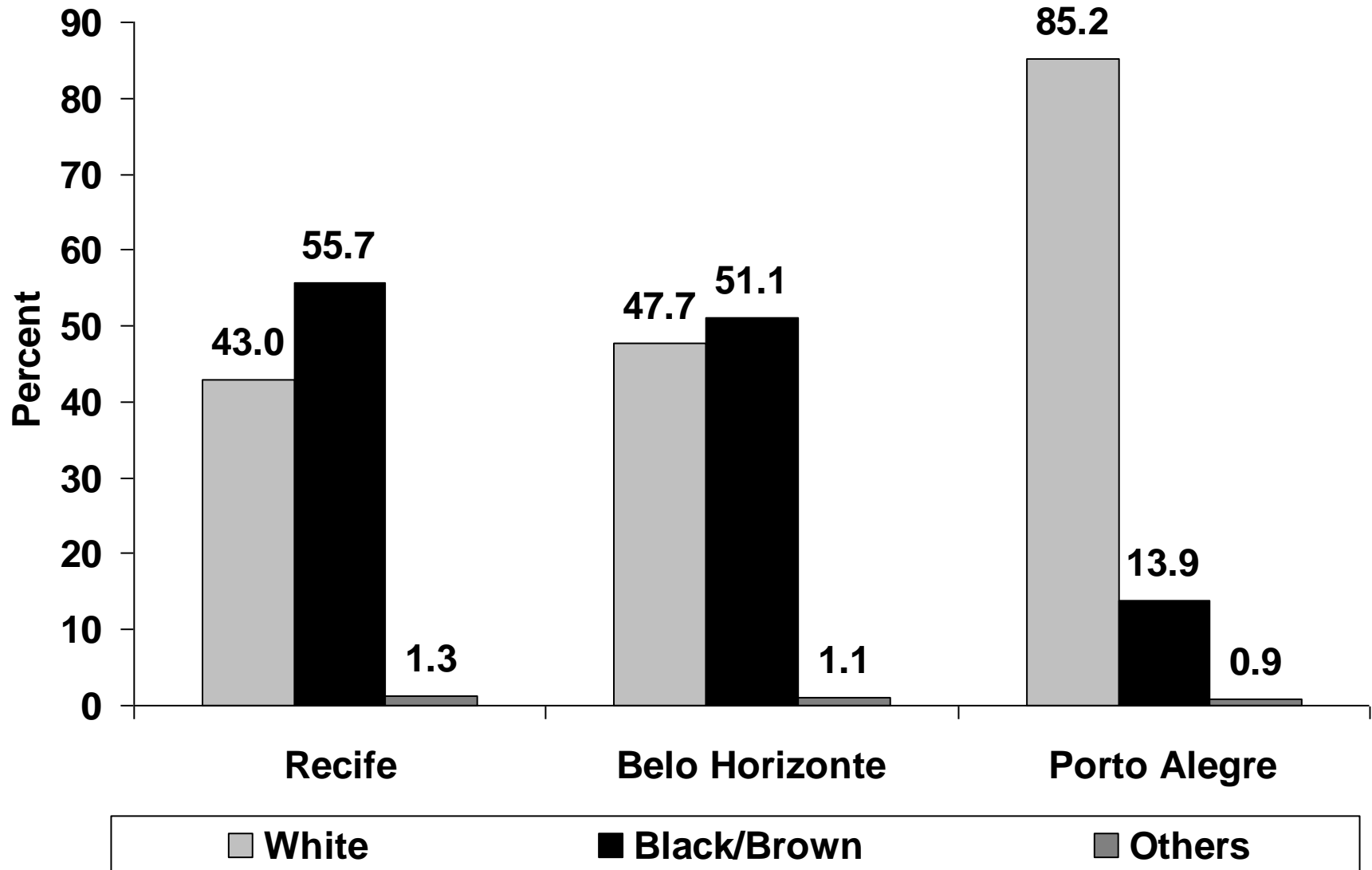
# Race Variable

- ✓ **Five categories of race and color identification: White, Brown (*Pardo*), Black, Yellow (for Asians), and Indigenous.**
- ✓ **Following the suggestion of previous studies (Wood and Carvalho 1994; Carvalho, Wood and Andrade 2003), the characterization of race is dichotomized.**
- ✓ **Browns and Blacks are grouped to be compared to Whites.**
- ✓ **Asians and Indigenous are not analyzed, because they do not represent a significant amount of the population.**

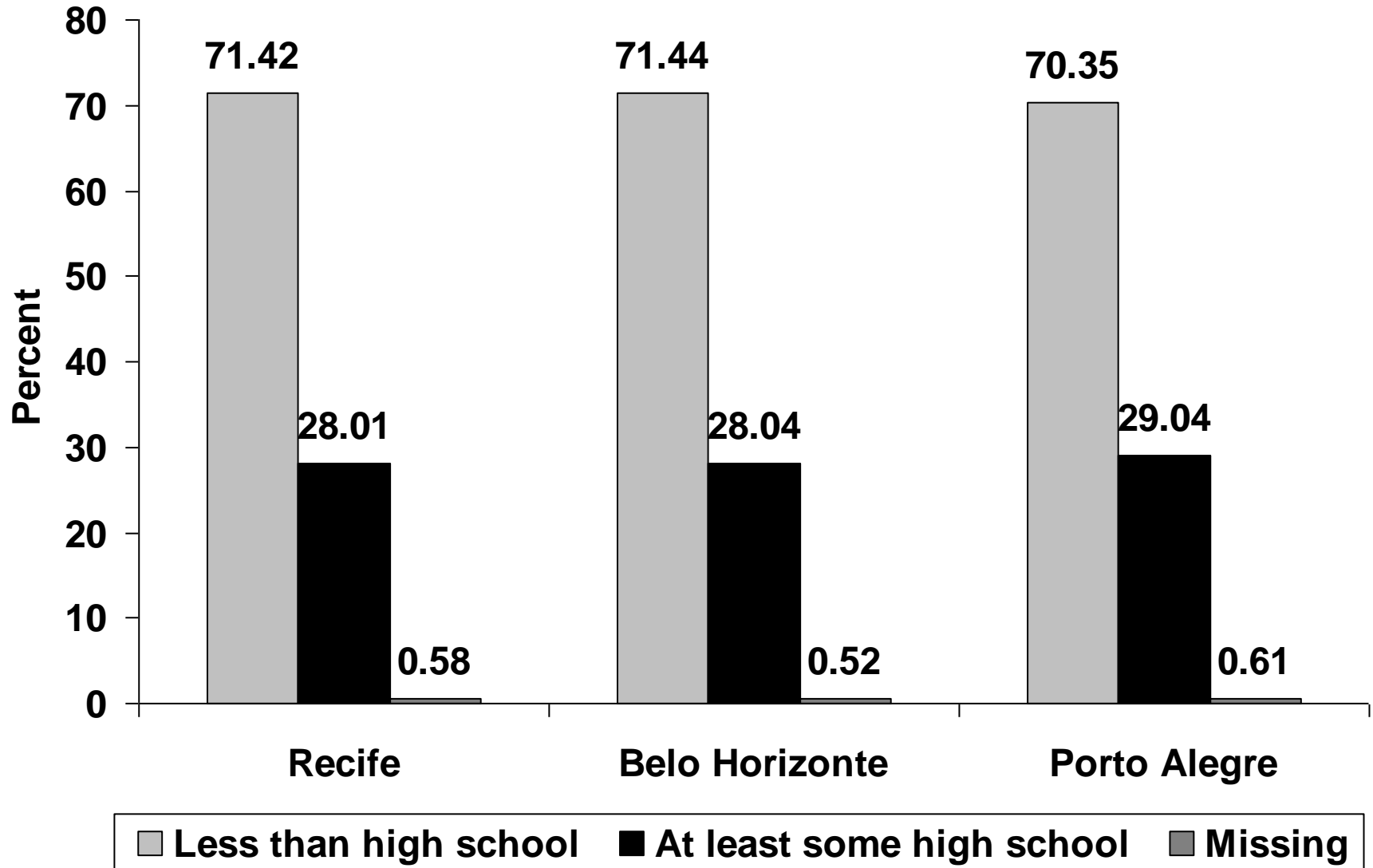
# Selected Metropolitan Areas, 2000

	<b>RECIFE</b>	<b>BELO HORIZONTE</b>	<b>PORTO ALEGRE</b>
<b>Total population with maps</b>	<b>2,991,948 (100%)</b>	<b>4,052,705 (95.2%)</b>	<b>3,348,234 (97.8%)</b>
<b>Percentage in central municipality</b>	<b>47.6</b>	<b>55.2</b>	<b>40.6</b>
<b>Number of municipalities with maps</b>	<b>8</b>	<b>13 (24 in total)</b>	<b>15 (21 in total)</b>
<b>Number of groups of census tracts</b>	<b>117</b>	<b>126</b>	<b>147</b>

# Percentage of Population by Race, 2000



# Percentage of Population by Education, 2000



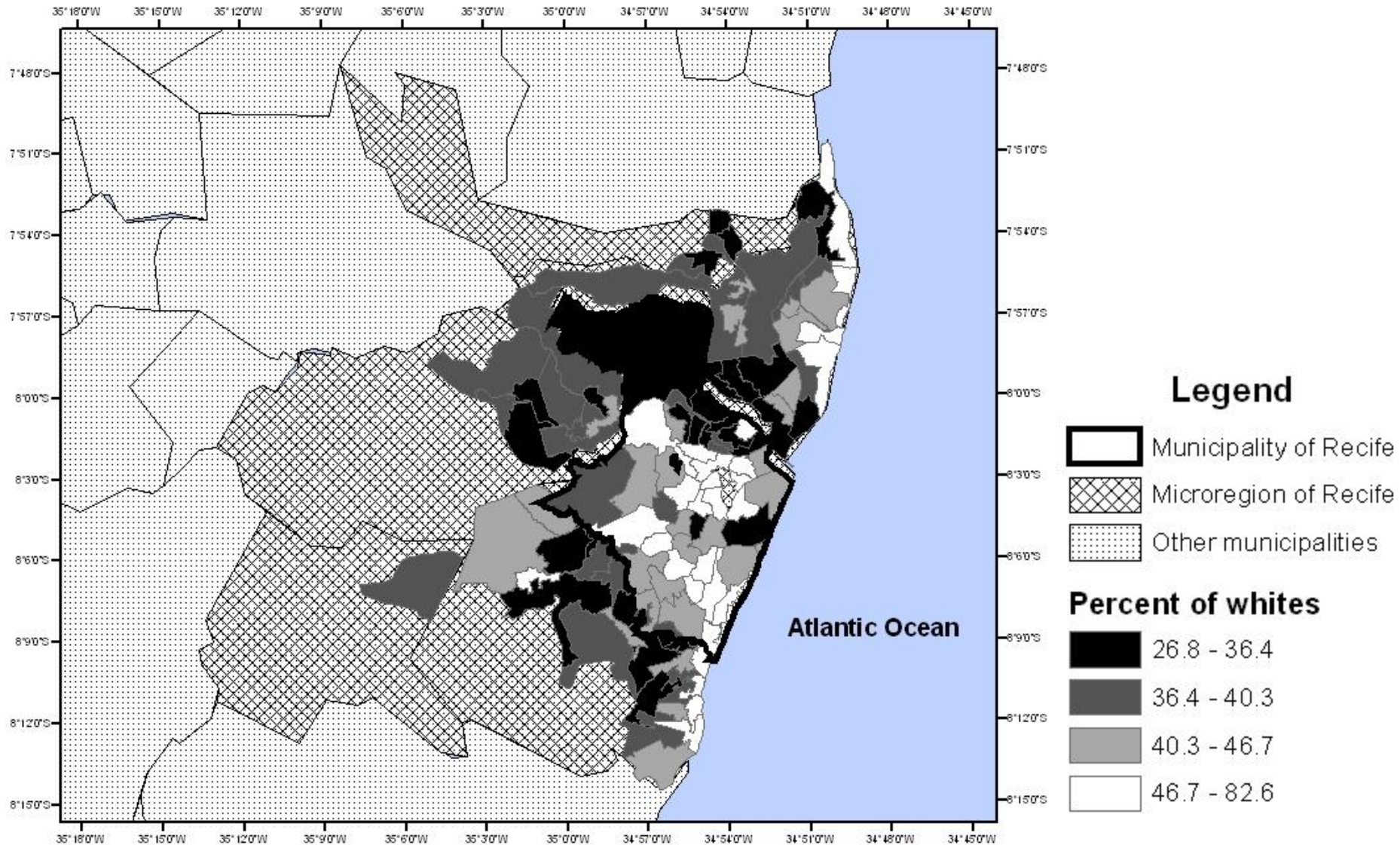


# Index of Dissimilarity, 2000

	<b>RECIFE</b>	<b>BELO HORIZONTE</b>	<b>PORTO ALEGRE</b>
<b>Segregation by race</b>	<b>0.17</b>	<b>0.24</b>	<b>0.27</b>
<b>Segregation by education</b>	<b>0.27</b>	<b>0.31</b>	<b>0.32</b>

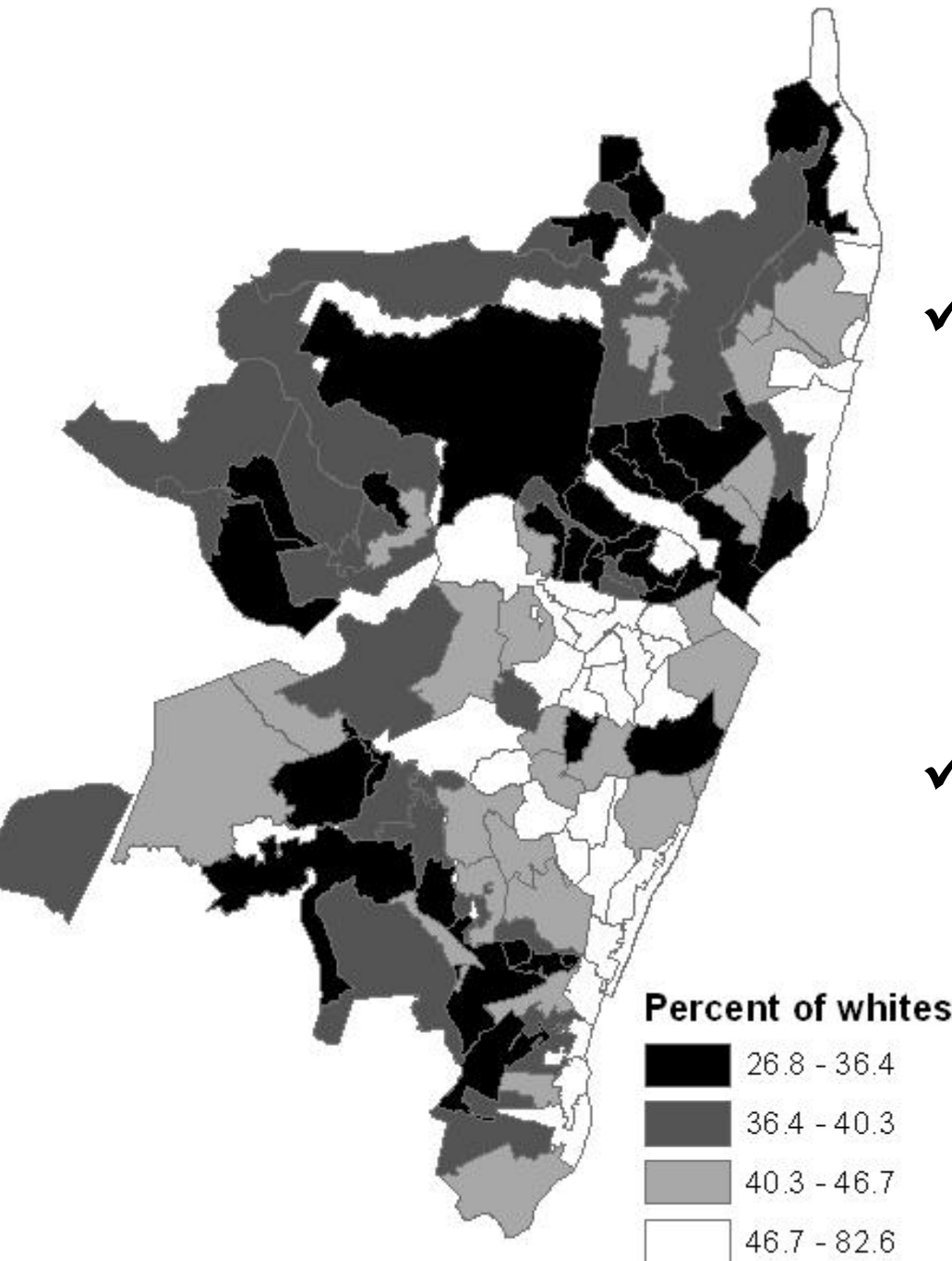
# Recife

## Percent of Whites Within Each Group of Census Tracts



# Recife

## Race and Education

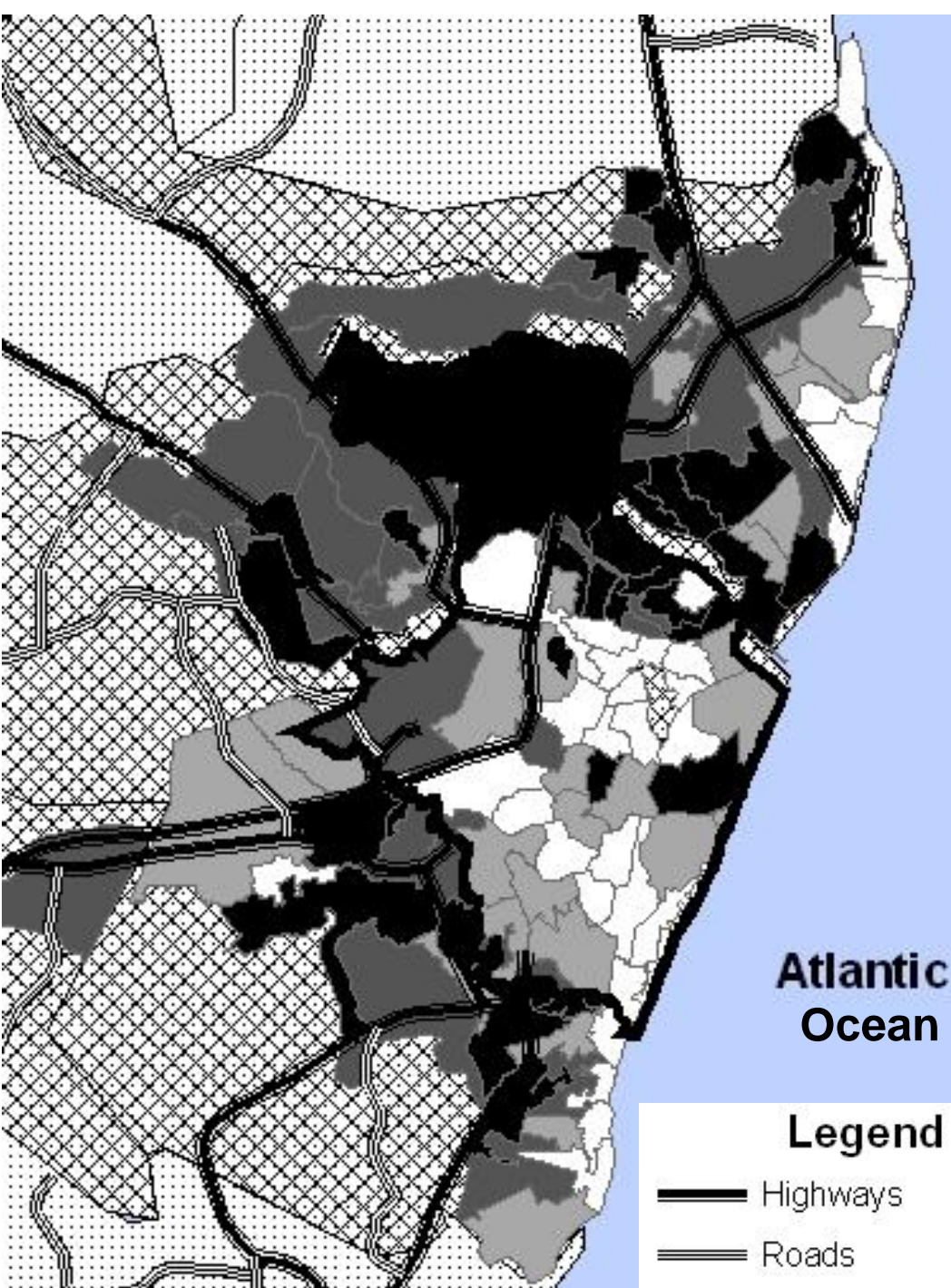


- ✓ **80% of groups of census tracts with highest proportions of Whites have most of the population with at least some high school.**
- ✓ **All areas with highest proportions of Blacks and Browns have most of the population with less than high school.**

# Recife

## Race and Location

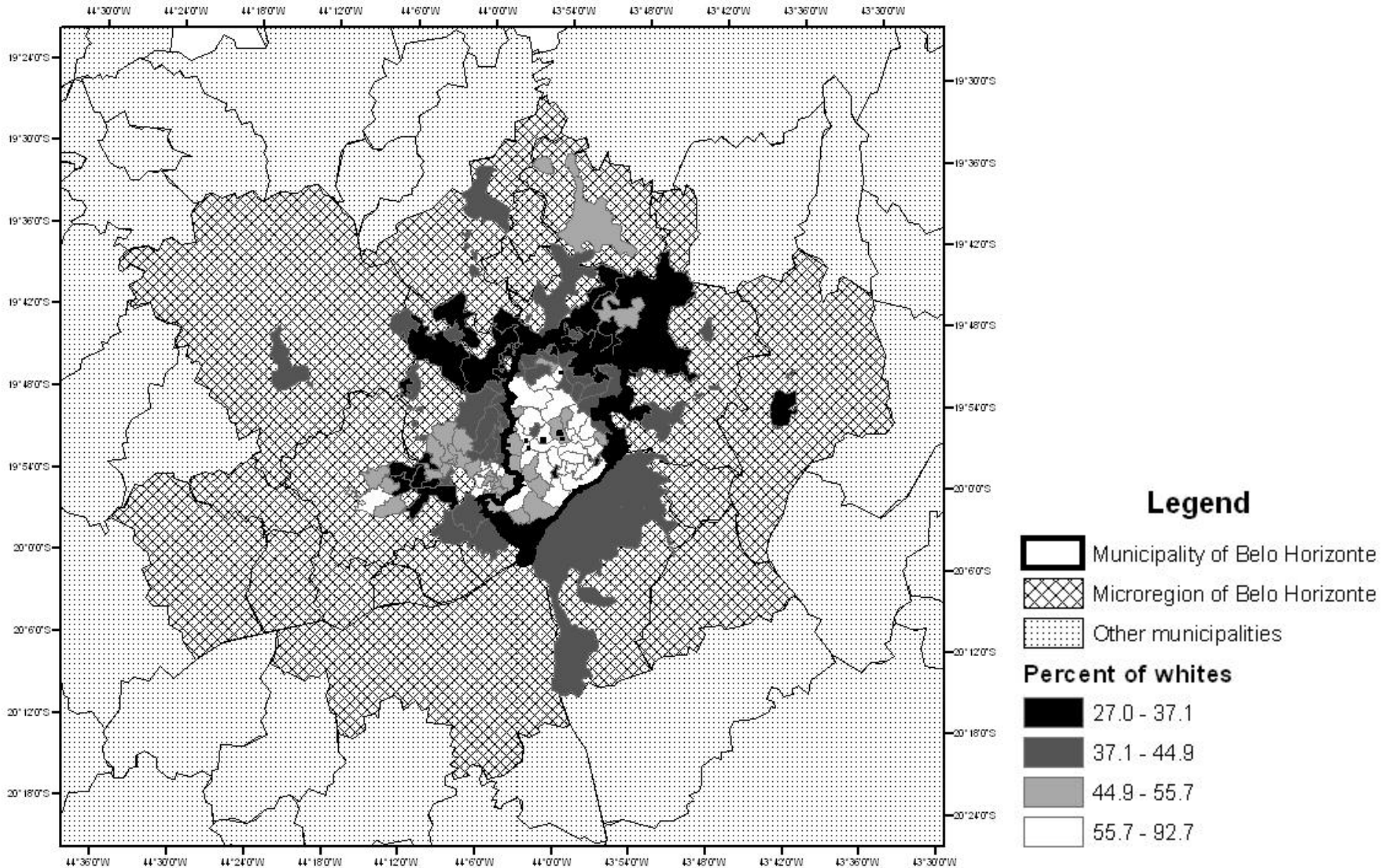
- ✓ **Groups of census tracts with highest proportions of Whites are located in the core of the city, or close to the coast.**
- ✓ **Areas with highest proportions of Blacks and Browns are concentrated in the periphery of the city.**





# Belo Horizonte

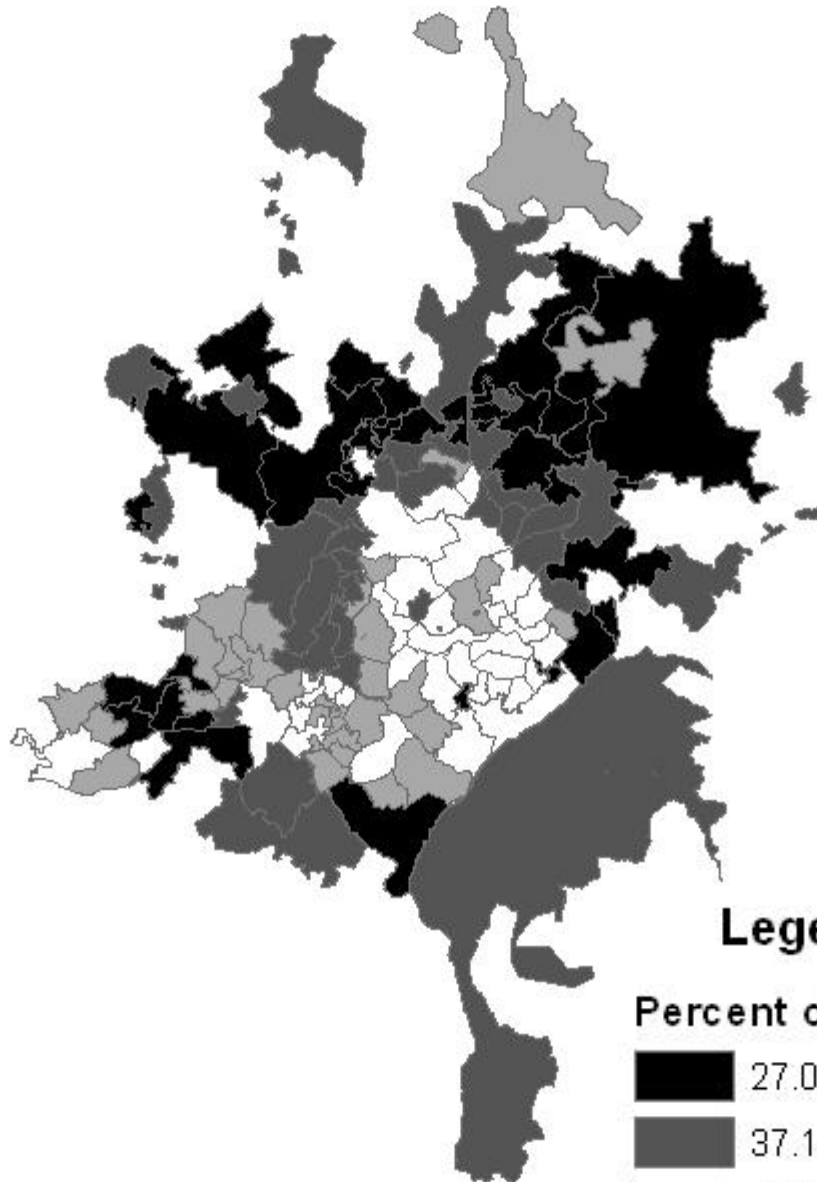
## Percent of Whites Within Each Group of Census Tracts



# Belo Horizonte

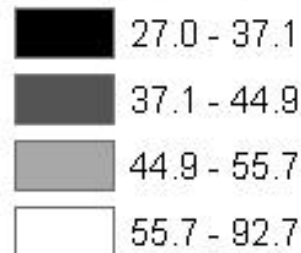
## Race and Education

✓ 71% of groups of census tracts with highest proportions of Blacks and Browns have 16% or less of the population with at least some high school.



### Legend

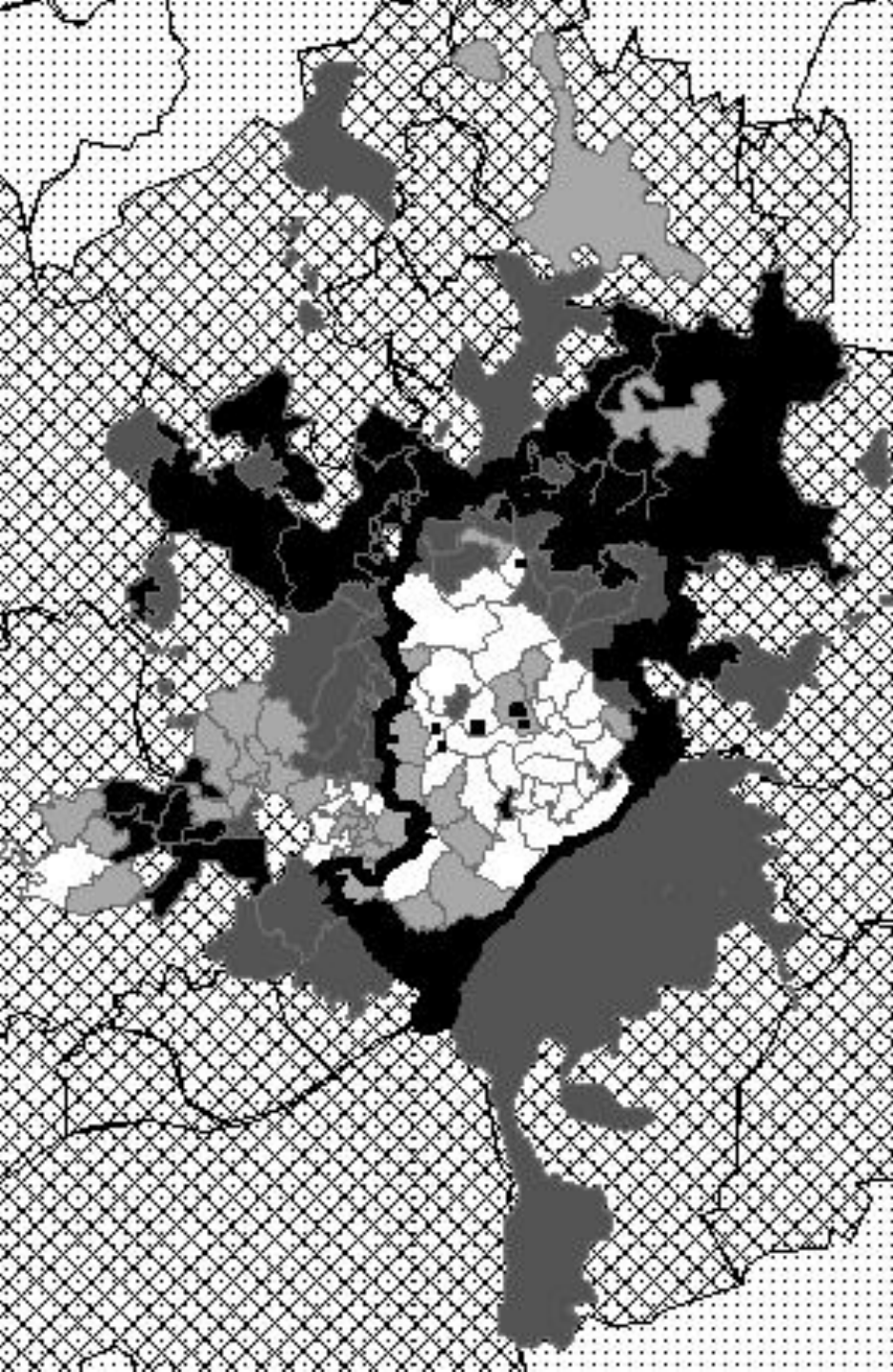
Percent of whites






# Belo Horizonte

## Race and Location

- ✓ **Groups of census tracts with highest proportions of Whites are in the central municipality.**
- ✓ **Areas with highest proportions of Blacks and Browns are in the Northern border.**



### Legend

-  Municipality of Belo Horizonte
-  Microregion of Belo Horizonte
-  Other municipalities

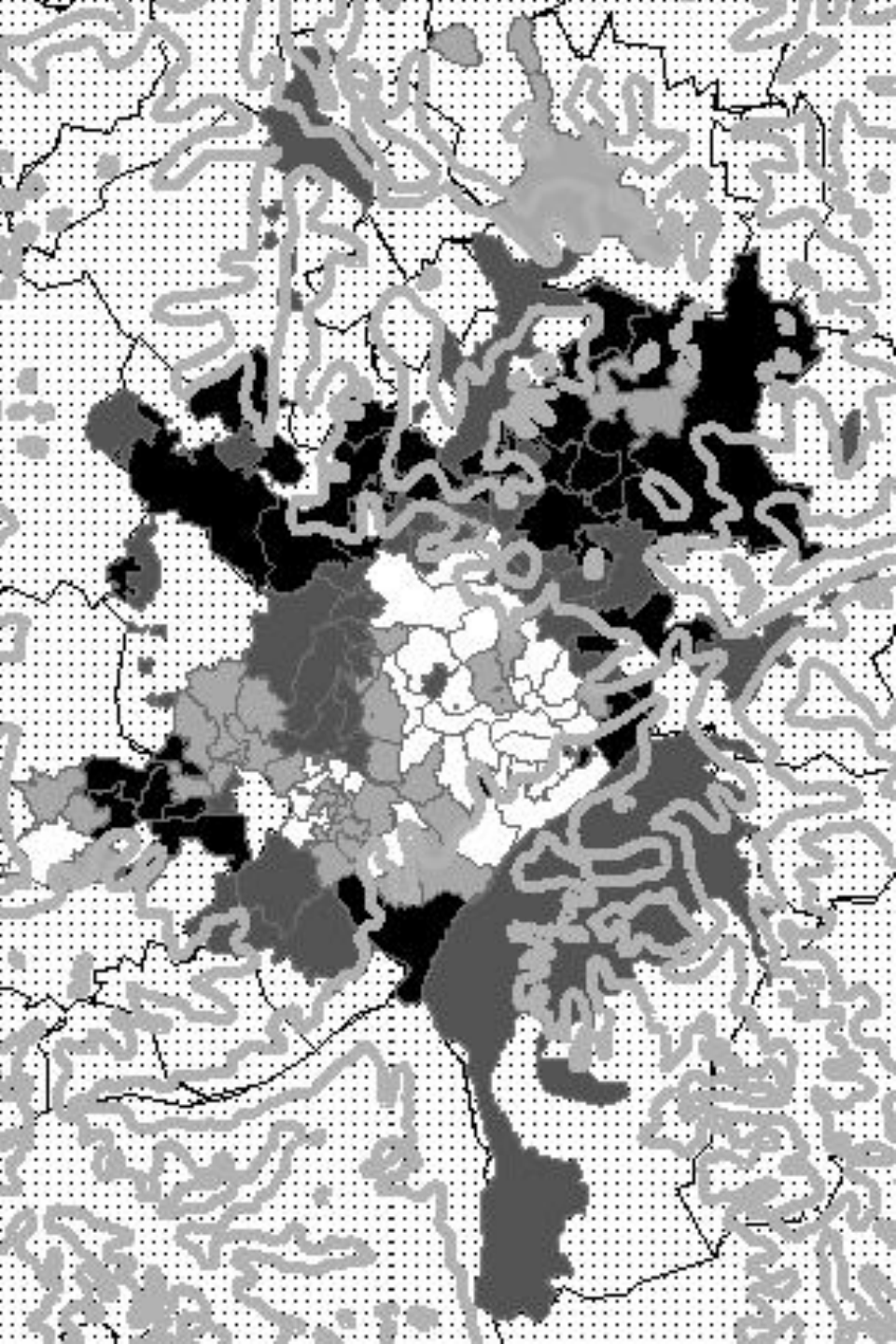
# Belo Horizonte

## Race and Elevation

- ✓ **Groups of census tracts with highest proportions of Whites are located in areas with low elevation.**
- ✓ **Blacks and Browns usually live on hills and mountains around the central municipality, where the public infrastructure is worse.**

### Legend

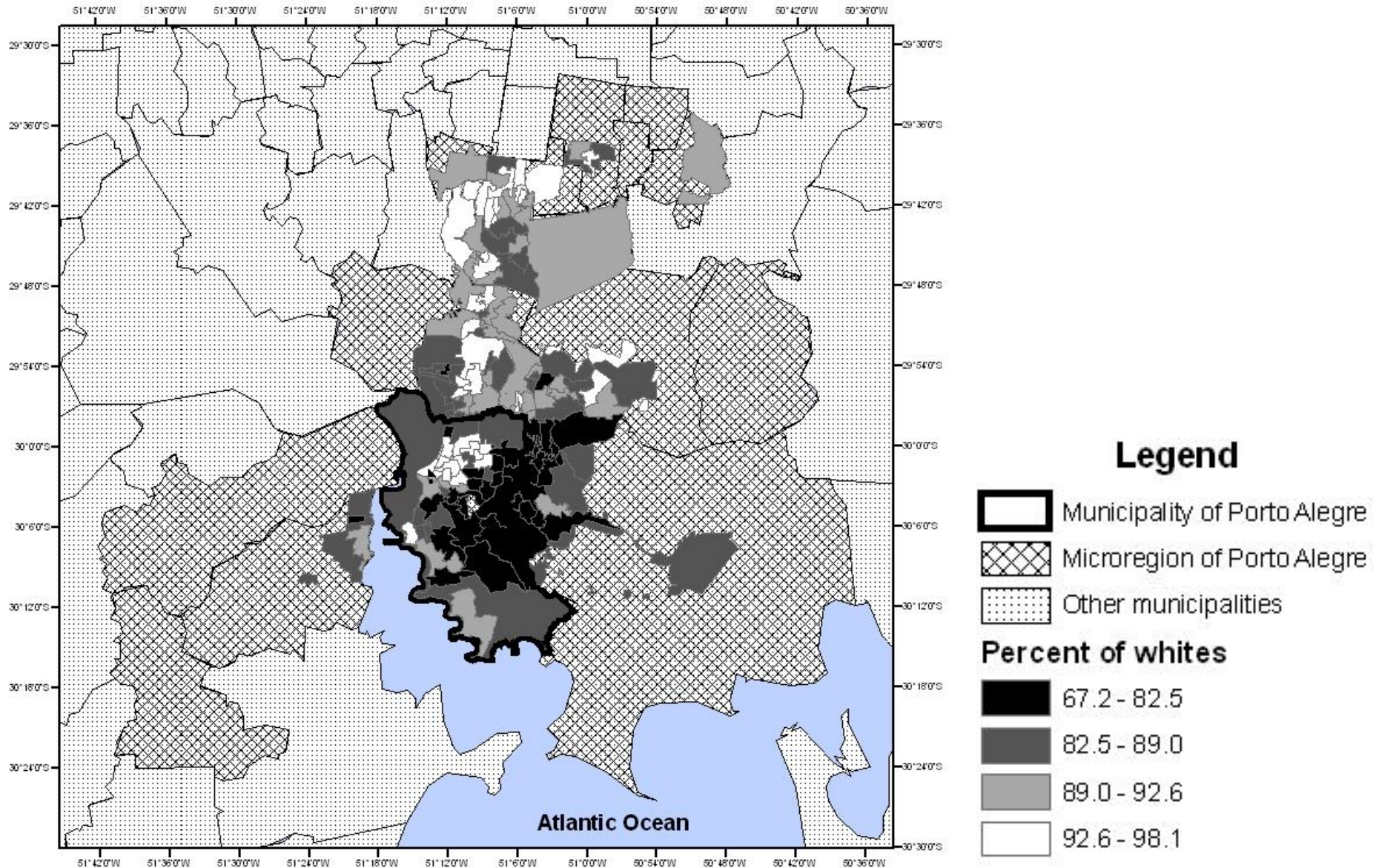
-  Municipalities
-  Elevation at least 0.5 miles (800 meters)





# Porto Alegre

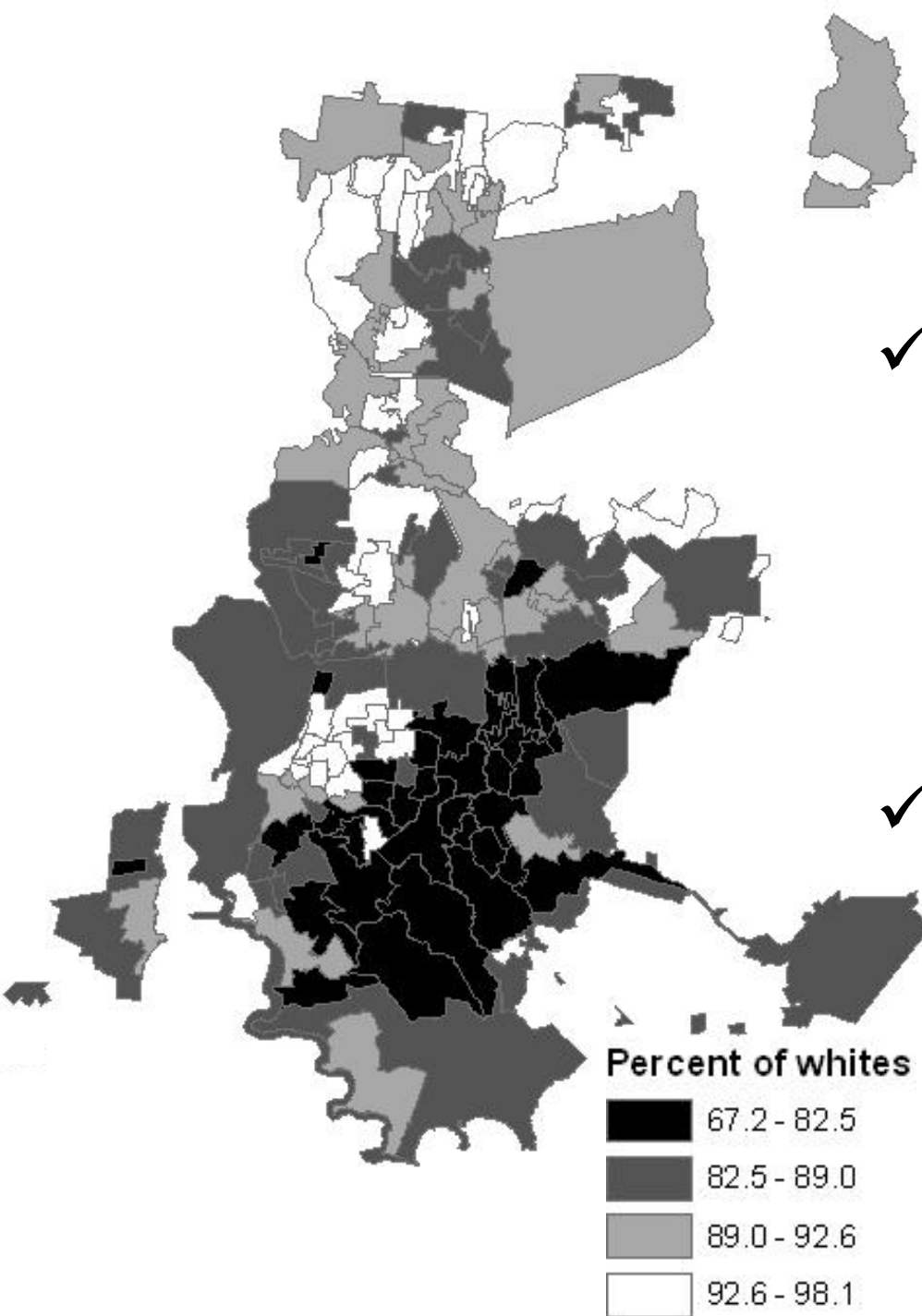
## Percent of Whites Within Each Group of Census Tracts



# Porto Alegre

## Race and Education

- ✓ 68% of groups of census tracts with highest proportions of Whites have most of the population with at least some high school.
- ✓ Only 1.4% of areas with lowest proportions of Whites have most of the population with at least some high school.










# Porto Alegre

## Race and Location

- ✓ **Main highways make the connection among groups of census tracts that have more White population.**
- ✓ **This is the case of the highway that goes from the South to the North part of this area.**

### Legend

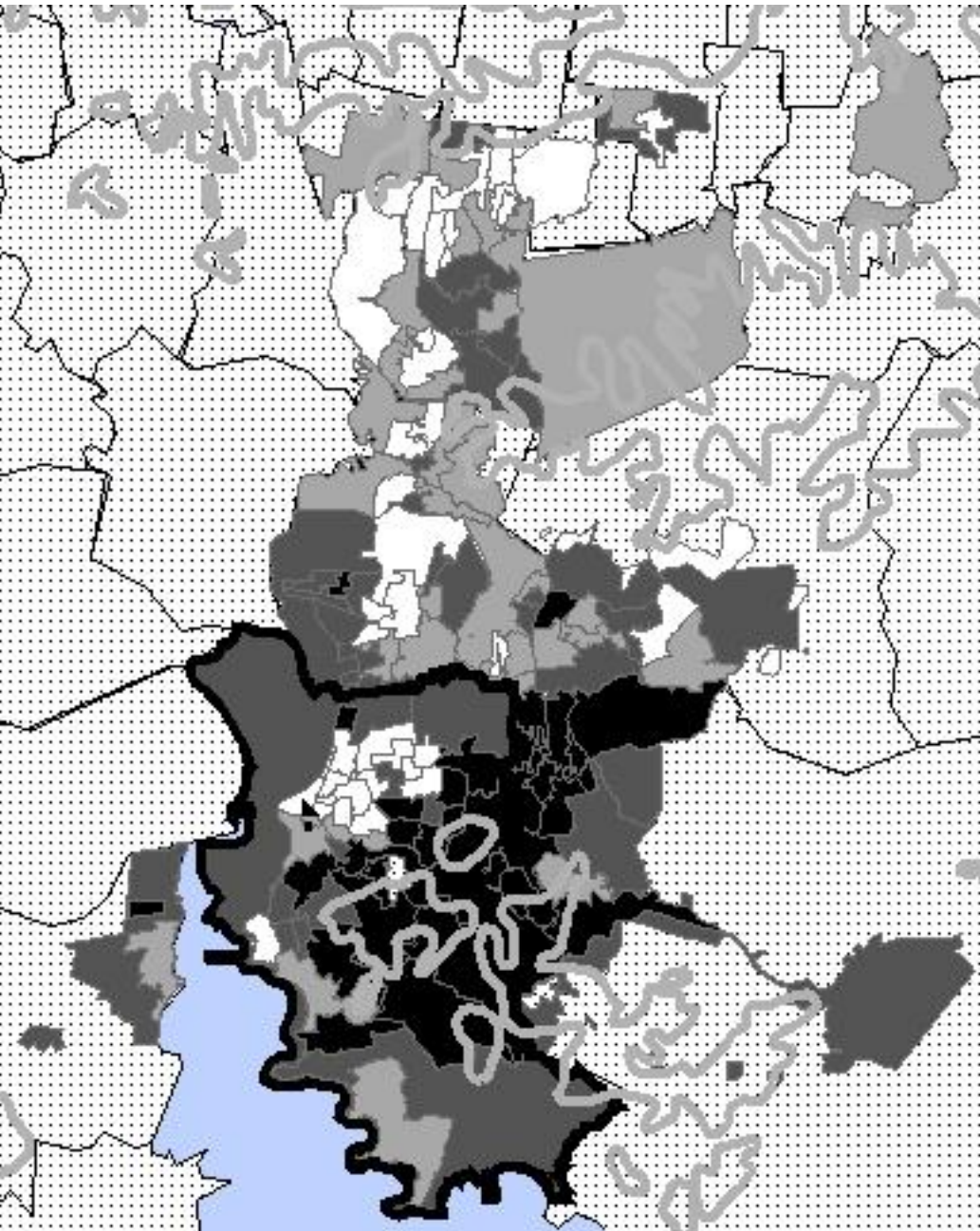
-  Municipality of Porto Alegre
-  Microregion of Porto Alegre
-  Other municipalities
-  Highways
-  Roads



# Porto Alegre

## Race and Elevation

- ✓ The most elevated areas in the South have higher proportions of Blacks and Browns.



### Legend

-  Municipalities
-  Elevation at least 0.0625 miles (100 meters)

# Discussion

- ✓ **There is spatial segregation by race and socioeconomic status in the selected metropolitan areas.**
- ✓ **Main roads connect White neighborhoods in Porto Alegre, and separate White from Black/Brown groups of census tracts in Recife.**
- ✓ **More elevated areas, with worse infrastructural conditions, have higher proportions of Blacks and Browns.**
- ✓ **An improvement to this research would be the use of spatial regression models to better understand the relationship between race and socioeconomic status.**